



CAST IRON ARMATURE BULGARIA® SA

7800 Popovo, Industrial zone

Phone: + 359 608 43654

<http://www.cia.bg>

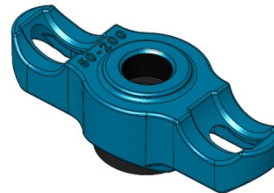
E-mail: cia@cia.bg



WATER INTAKE BRACKET	DN	PN
SERIES 761	50-200 (G1")	16
SERIES 763	80-300 (G2")	16

APPLICATION

The water intake bracket is used for deviations in pipelines with outlet 1" for ser.761 and 2" for ser.763.



INSTALLATION

The device is installed on steel, cast iron, asbestos cement and PVC pipes of various diameters and pressure PN16.



MATERIALS FOR MAJOR DETAILS

No	Detail	Material	Nomer	Standard
1	Head	EN-GJS 500-7	5.3200	BDS EN 1563
2	Flatiron	X20Cr13	1.4021	BDS EH 10088-1
3	Sealing of the head	EPDM		
4	Sealing of the flatiron	EPDM		
	Coating	Epoxy RAL 5015		



CAST IRON ARMATURE BULGARIA® SA

7800 Popovo, Industrial zone

Phone: + 359 608 43654

<http://www.cia.bg>

E-mail: cia@cia.bg



DIMENSIONS

DN	Range of flatiron	G,Kg ser.761	G,Kg ser.763
80	75-105	2,0	2,6
100	105-130	2,1	2,7
150	155-180	2,2	2,8

